

Asby Scar- Artwork in Progress by Margaret Shaw



I took this lovely photo in late February on one of the few fine days we had at the start of the year.

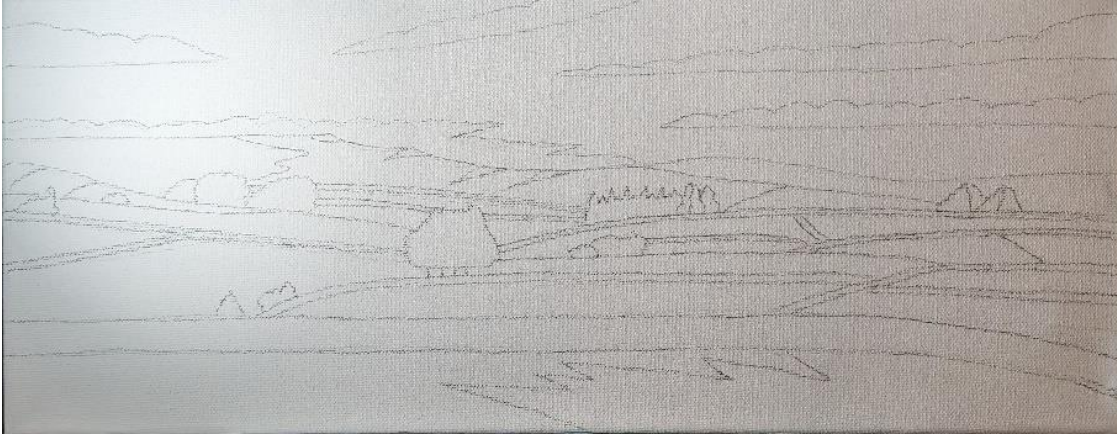


Having just completed a poster style painting of wild boar fell (really like it) I was looking for an image to compliment it. That plus the fact I'd mixed up so much paint some similar colours would work (adding a few more yellows to the green mixes.



Cropped the picture to fit the canvas size of 50 x 20 cm and did an outline drawing.

Asby Scar- Artwork in Progress by Margaret Shaw



Then transferred the image to the canvas making a few tweaks.



Blocking in the base colours with an initial layer of paint.



Onto the greens – just working the tones and separating the different colours. Can already see that I need to brighten the scar on the horizon and create a central band of light. 2nd coat of paint will make a few changes.

Asby Scar- Artwork in Progress by Margaret Shaw



Painted in the walls



Followed by the trees – can see the need to be darker



Clouds light to dark greys.

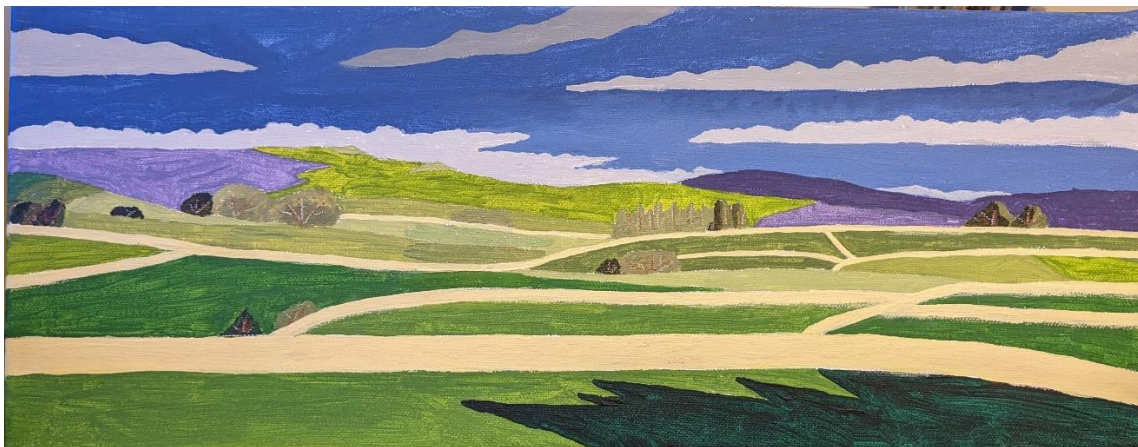
Asby Scar- Artwork in Progress by Margaret Shaw



Lightened and thickened some of the walls.
I'm experimenting on the trees with branches in burnt umber as think
I will be putting some dabs of that into the walls.



Wasn't happy with the trees in the middle as they stop the eyes going into the scene.
Removed them with photoshop.



Then removed them with paint.

Asby Scar- Artwork in Progress by Margaret Shaw



Top layers of paint on the sky and the land giving a smooth effect.



Completed the clouds. Refined and changed the colours of the trees. Added a couple more walls mid picture. Added some shrubs. Tidied up all the walls. Back and mid painting now complete.



Final layers of paint on the walls and painting complete.

Added to the [landscape gallery](#).

[Prints available](#).

© 2024 Margaret Shaw