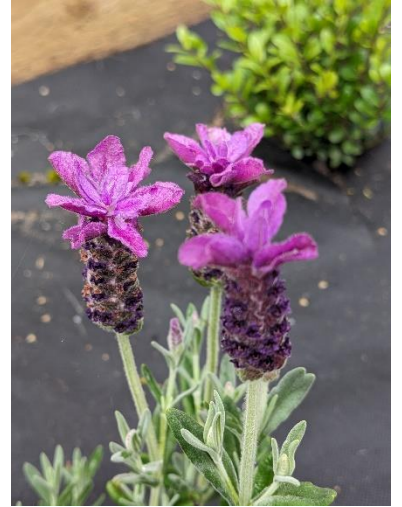


# French Lavender - Artwork in Progress by Margaret Shaw

The second from my garden series – French Lavender



Picture gridded to 23 x 15 cm



Outline drawing transferred to pastel paper with lavender and green pastel pencils.

Pastel commenced with shades of pale red purple and white.



## French Lavender - Artwork in Progress by Margaret Shaw

Completed the first bloom using blending sticks to add texture. Dark blue was added to the palette to create a dark purple underneath the petals.

As usual the camera has leapt onto the blues – it is in fact dark purple.



Completed all the flowers.

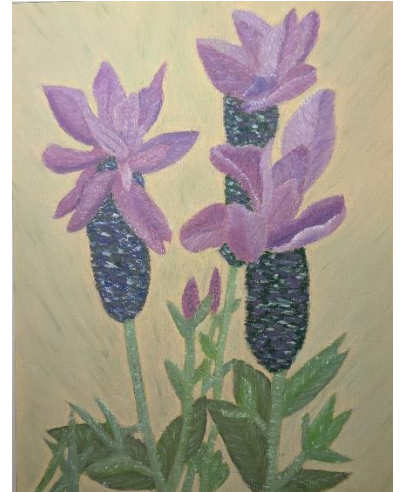


Onto the leaves and stems. It was difficult to find a lavender green. So, the stems and were marked in with a light blue green and then overworked with different tones of grey greens. Here's the colours used at this point. I would not have anticipated that the leaves and stems would take more colours than the flowers.

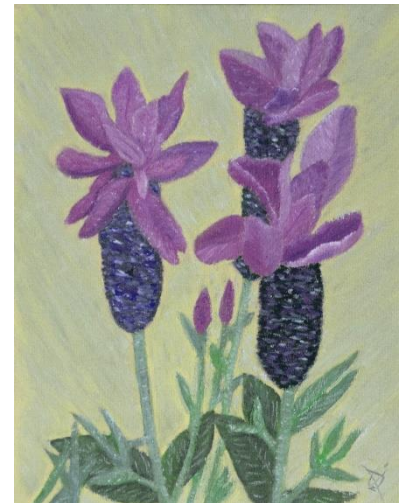


## French Lavender - Artwork in Progress by Margaret Shaw

Decided on a plainish background. At this point I realised that the planned A4 mount wasn't going to work so expanded the picture for a 10 x 12 inch mount.



Next decided that there were too many leaves and some were too thick. With the lightest yellow ochre used in the background minimised some of the leaves and removed others. Added a bit more texture with white to complement the flowers. Palest green in my pastel box added to the background.



Thinking of a light frame,

Added to the [Flora Gallery](#).

© 2024 Margaret Shaw

